

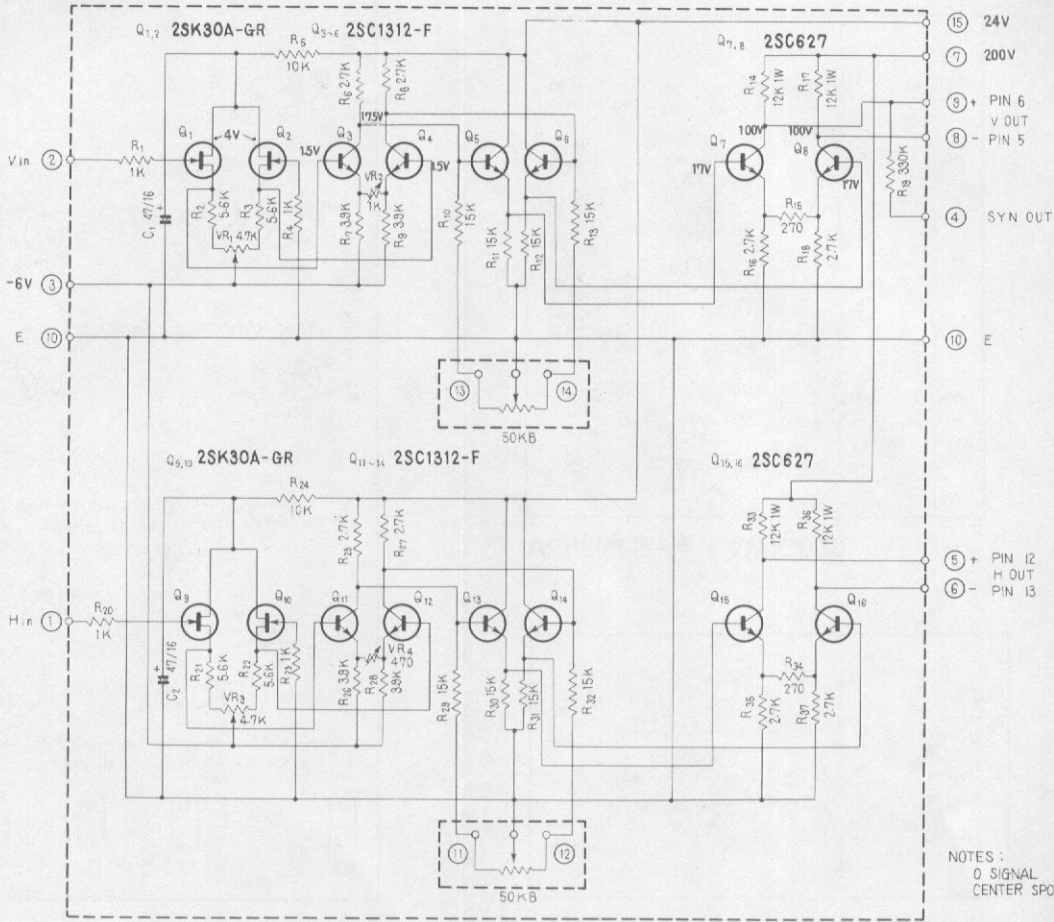
STEREO DISPLAY

SD-1100

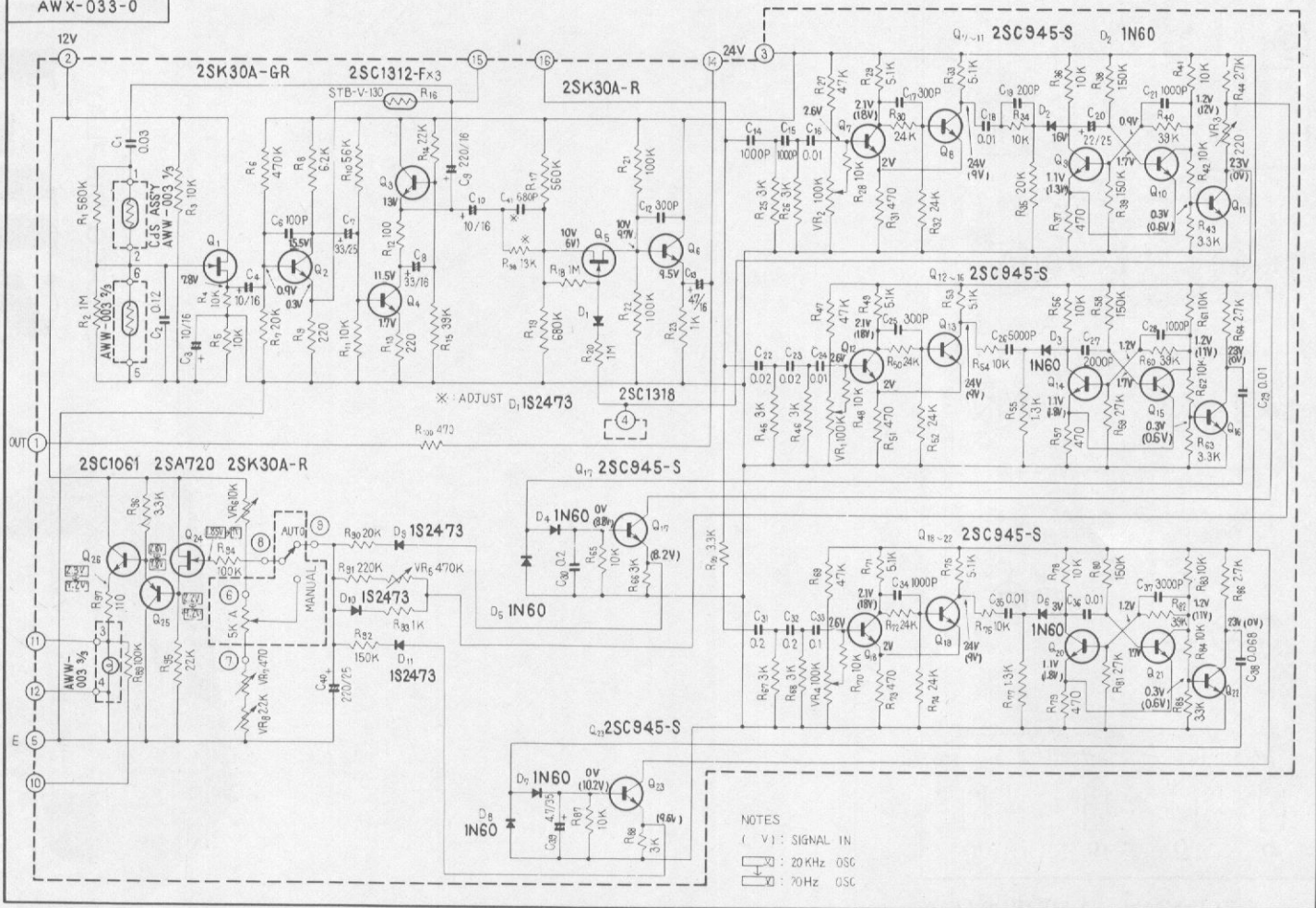
FW

V. H. AMP ASS'Y

AWX-032-0

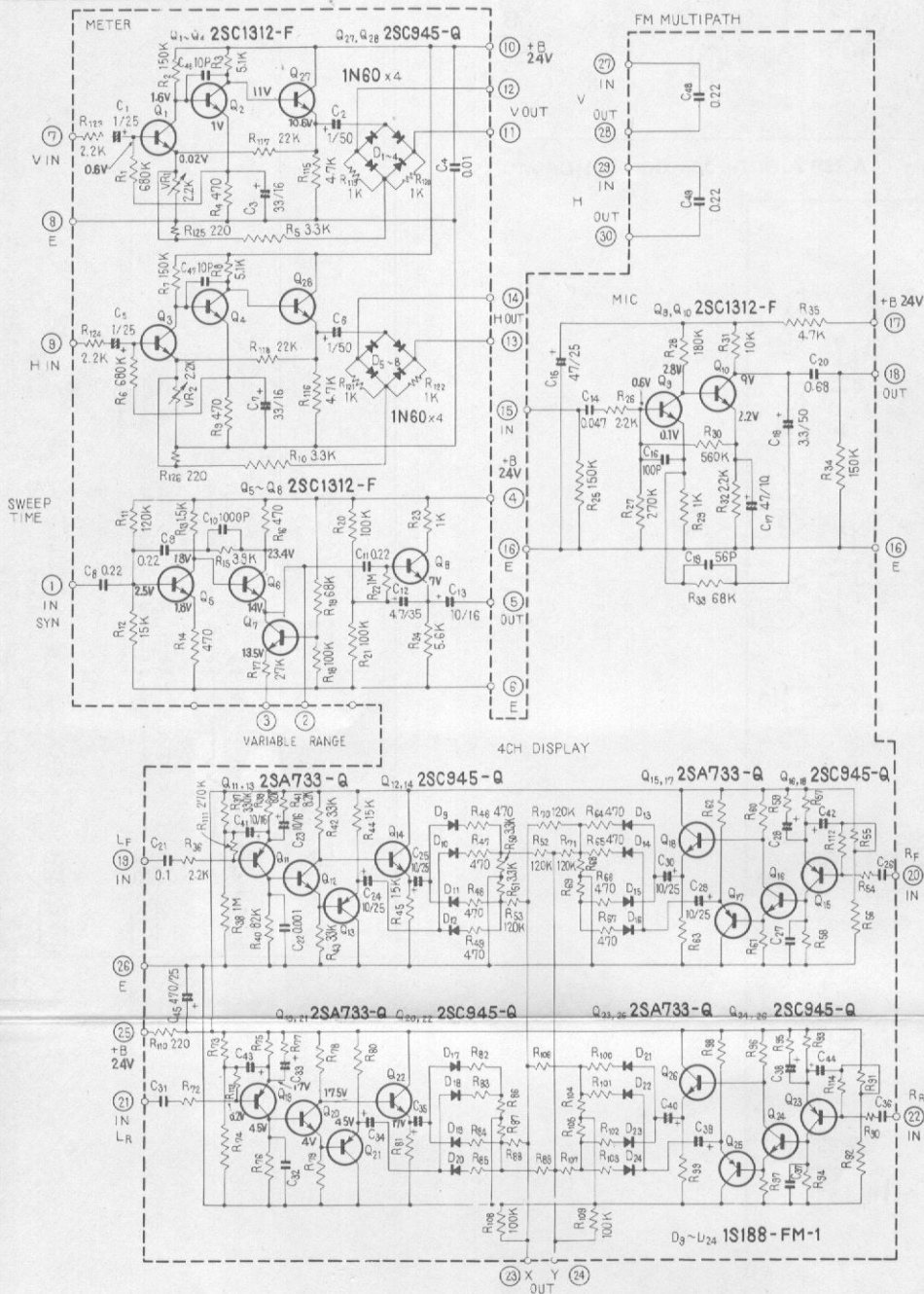


NOTES :
 O SIGNAL
 CENTER SPOT

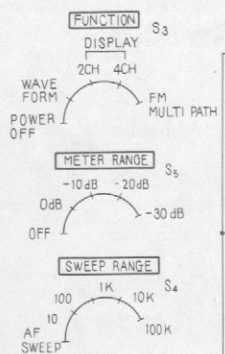


COMPLEX AMP ASS'Y

AWM-034-0

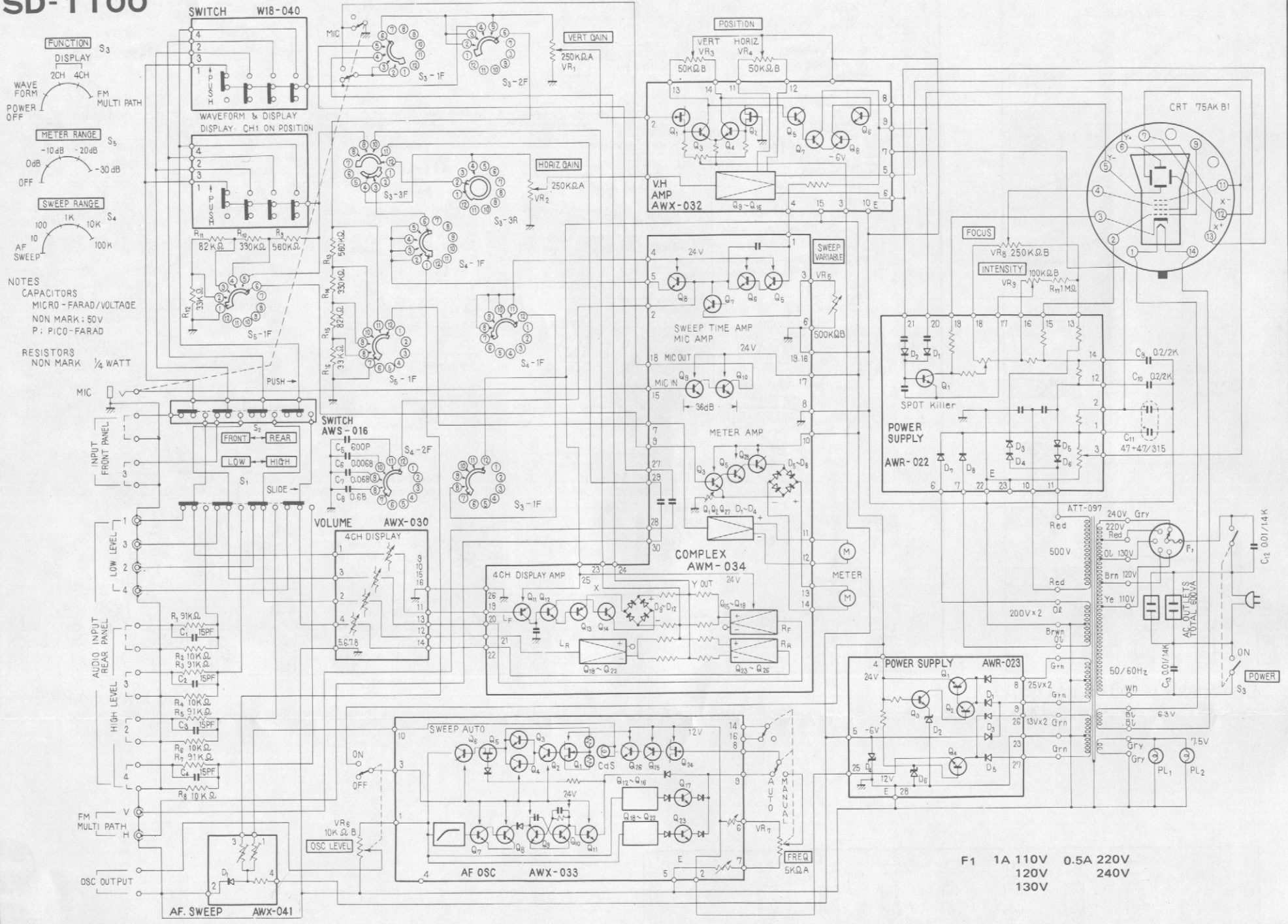


SD-1100



NOTES
CAPACITORS
MICRO - FARAD / VOLTAGE
NON MARK : 50V
P : PICO - FARAD

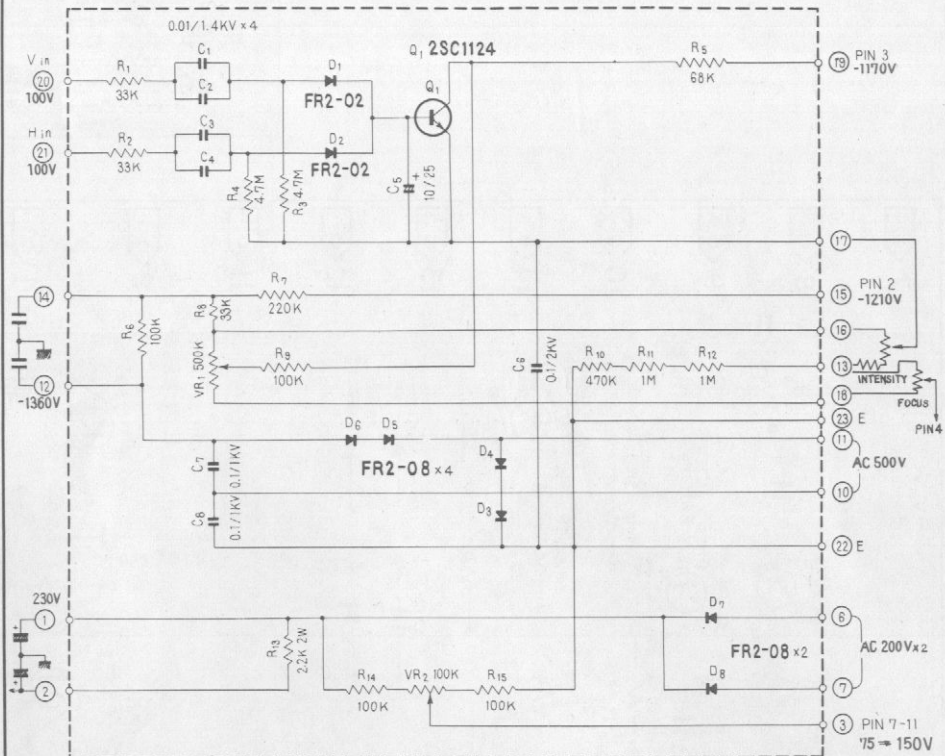
RESISTORS
NON MARK 1/4 WATT



F1 1A 110V 0.5A 220V
120V 240V
130V

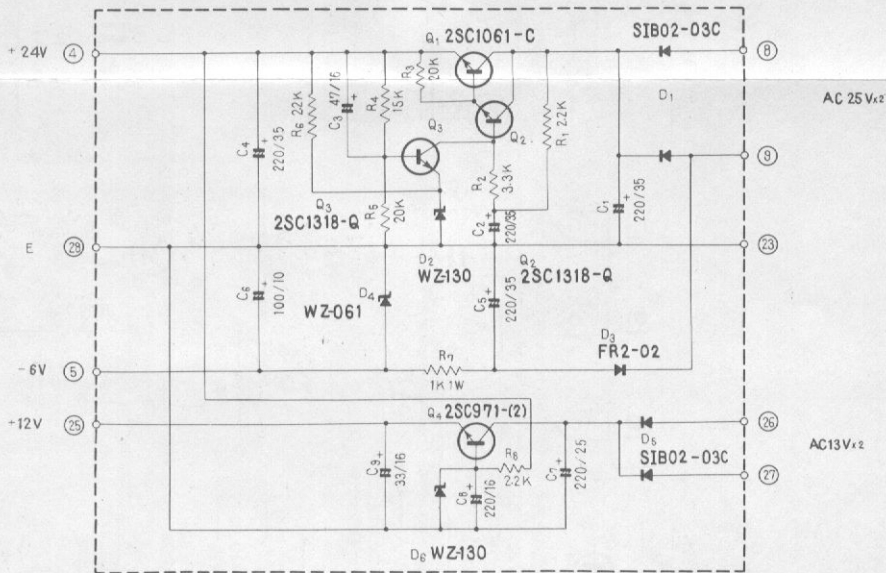
POWER SUPPLY CIRCUIT ASS'Y

AWR - 022 - 0



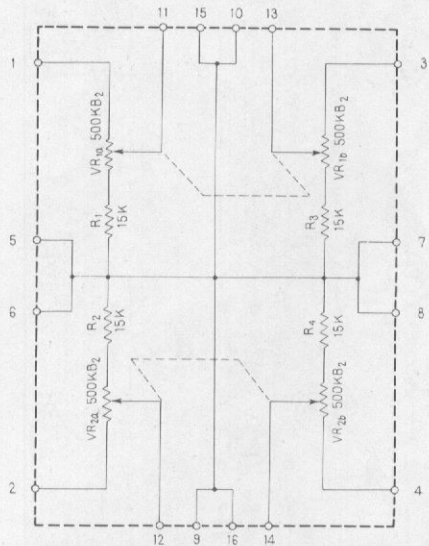
POWER SUPPLY CIRCUIT ASS'Y

AWR - 023 - 0



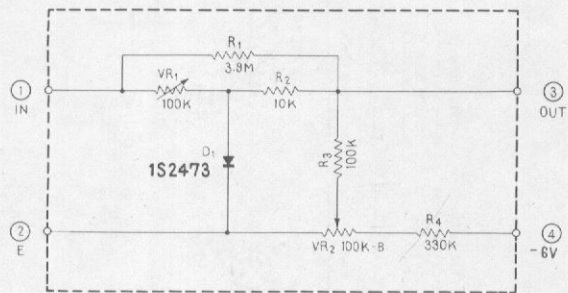
VOLUME CIRCUIT ASS'Y

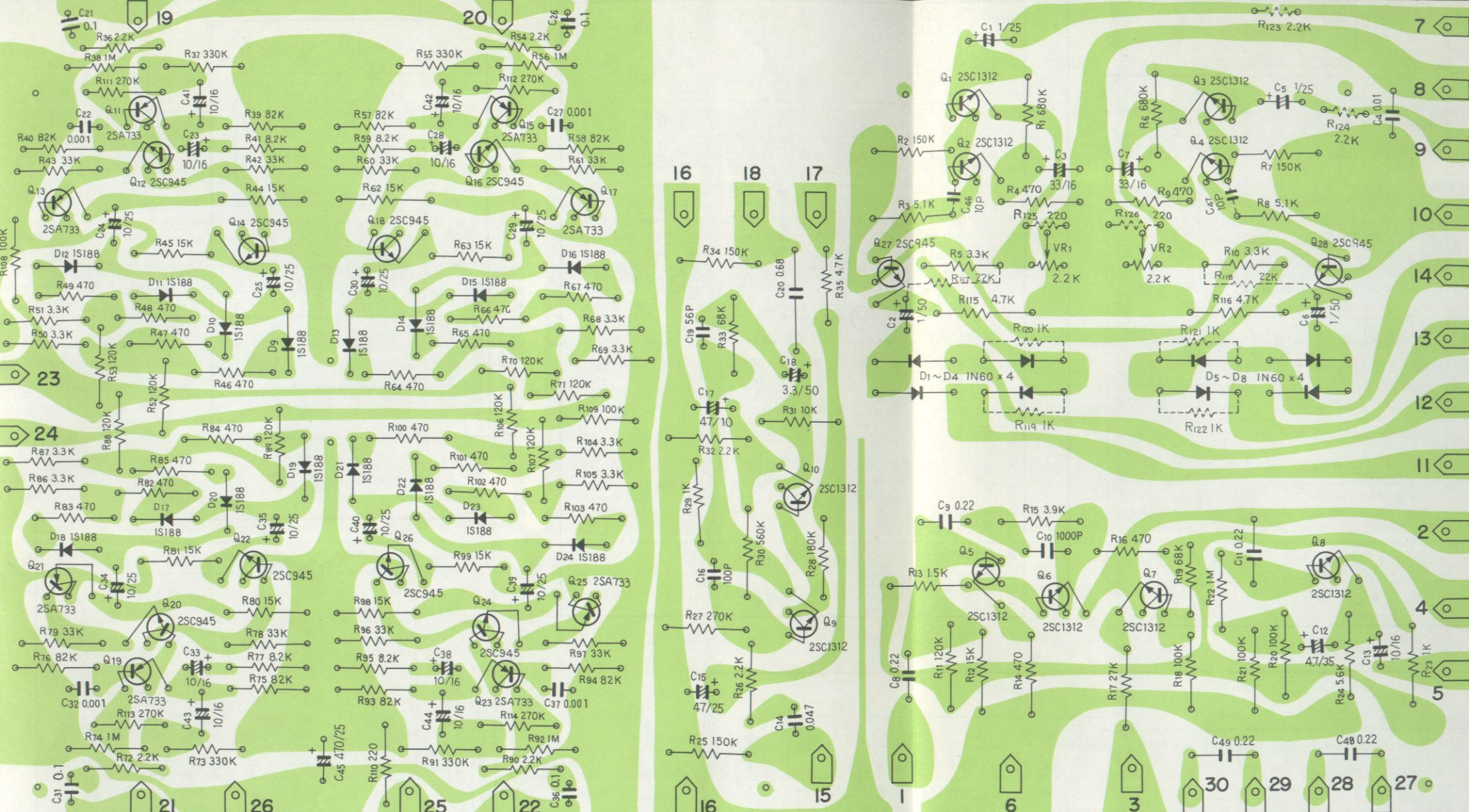
AWX-030-0



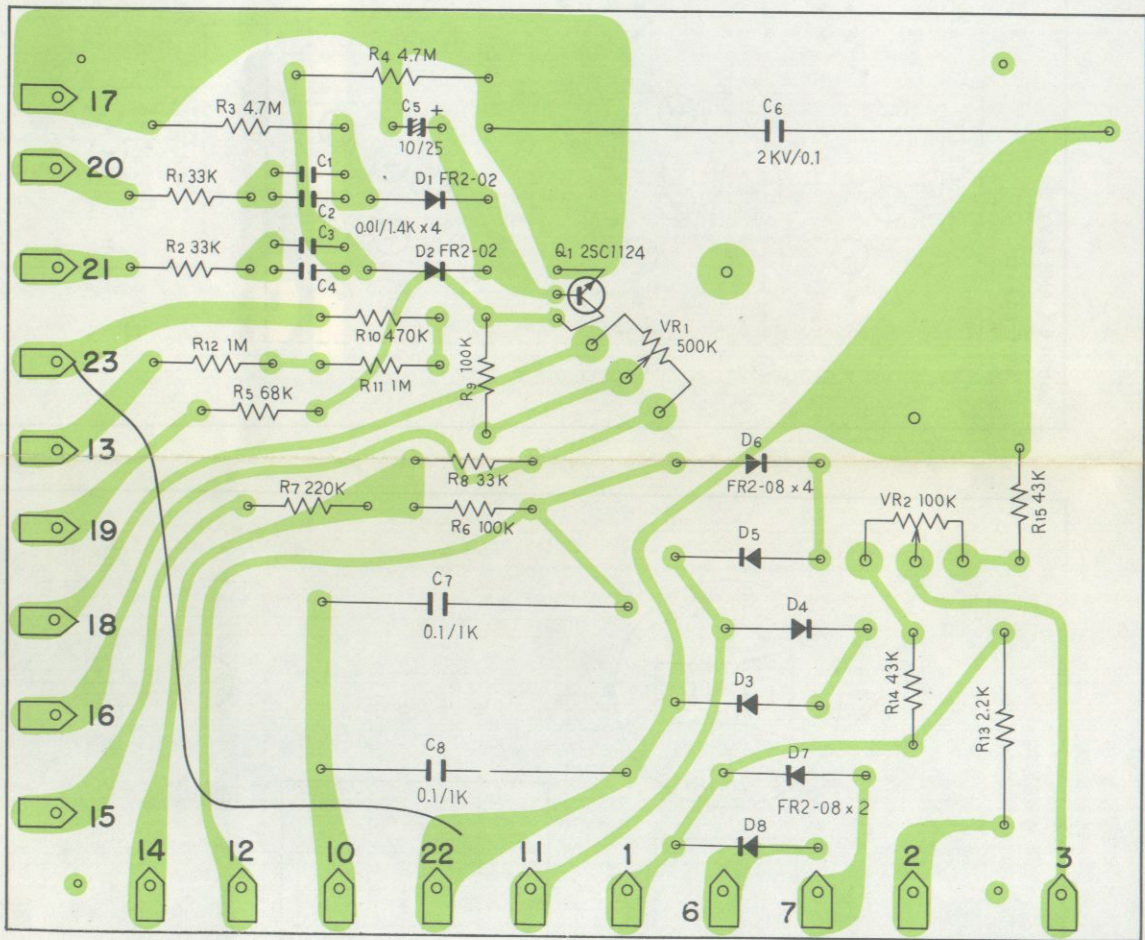
AF SWEEP CONTROL ASS'Y

AWX-041-0

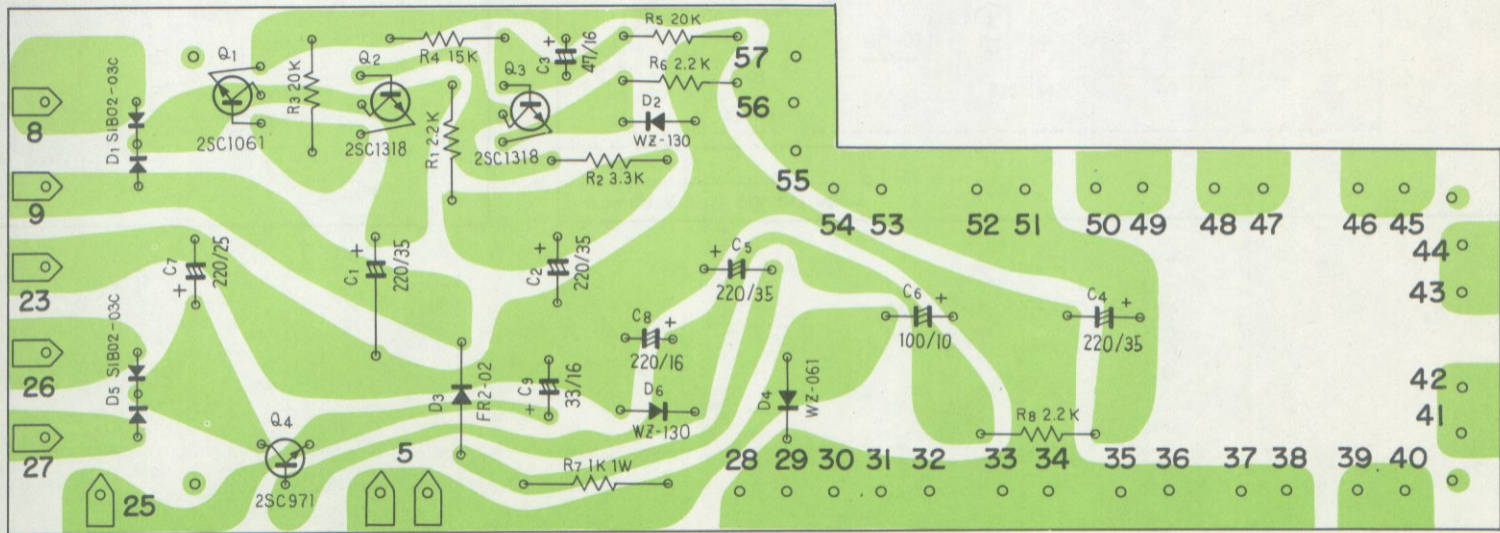




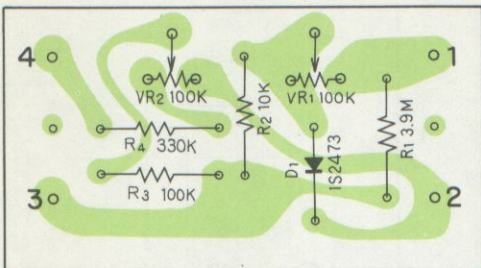
7
8
9
10
11
12
13
14
15
16
17
18
19
20
21
22
23
24
25
26
27
28
29
30



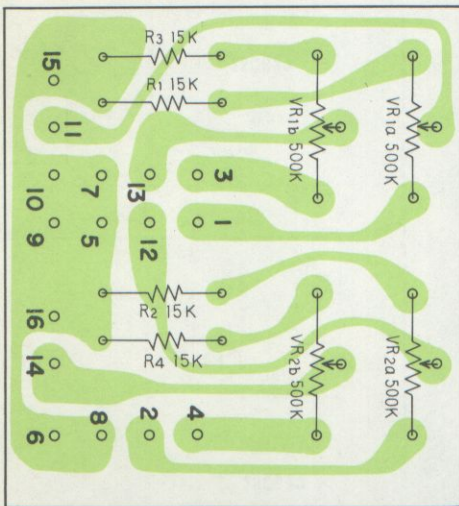
Low voltage power supply ass'y AWR-023



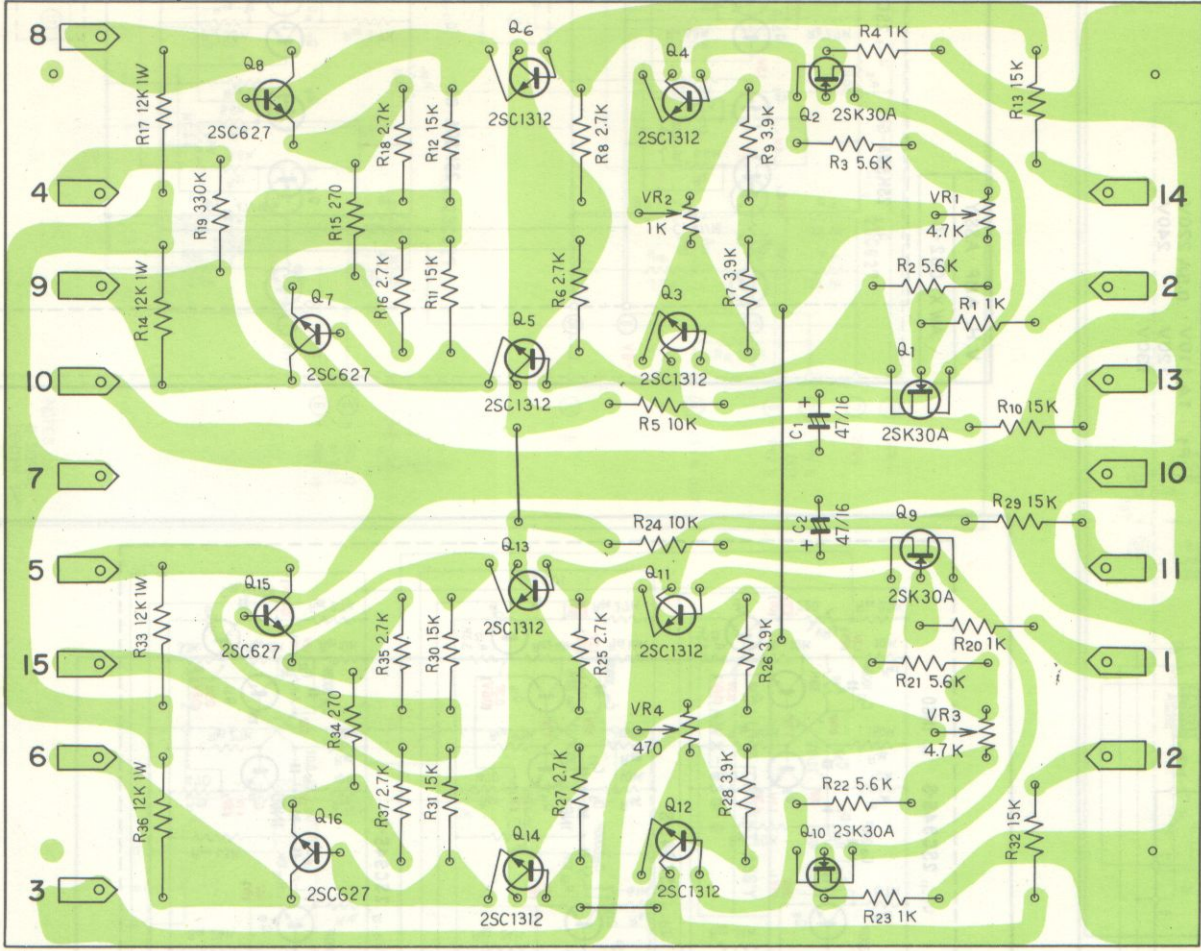
AF sweep ass'y AWX-041



Volume ass'y AWX-030



V. H amp ass'y AWX-032



AF amp ass'y AWX-033

